

From: John Burr, Director – Highways, Transportation and Waste

To: Dover Joint Transportation Board

Date: 11th December 2014

Subject: Section 106 Spend – Sandwich Town Centre

Classification: Unrestricted

Summary:

This report gives a brief summary regarding the Section 106 Spend for Sandwich Town

1.0 Introduction

1.1 Kent County Council (KCC) are carrying out works to Ramsgate Road Sandwich utilising funds from the Local Sustainable Transport Fund to improve sustainable travel links between Sandwich Town and Discovery Park. Such works relieve developers of their obligations in The Section 106 Agreement for Phase 1 of the Willowbank development. As such it has been agreed between KCC, DDC and the developers that KCC will keep the existing Section 106 money to fulfil the original obligations (as part of the proposed scheme) and in addition the developers have costed the physical works of the former scheme which would have been subject to a Section 278 Agreement and also given this money to KCC to spend in Sandwich Town, which amounts to an additional £50k

1.2 The original Section 106 Agreement comprised:

£35,000 traffic management works in Sandwich town centre and/or the A256/A257 roundabout (*still to used in this regard but KCC now to deliver*)

£500 towards admin costs of changing the 40 mph speed limit on Ramsgate Road to a 30mph speed limit (*to be carried out by KCC as part of the LSTF scheme*)

£1,000 towards monitoring vehicle speeds along Ramsgate Road six months after implementation of the 30mph speed limit (*to be carried out by KCC as part of the LSTF scheme*)

£10,000 towards implementing further speed reduction measures on Ramsgate Road... (*to be carried out by KCC as part of the LSTF scheme*)

£2,000 towards monitoring traffic queues and signal timings on Sandwich Toll Bridge & reconfiguring signal settings. (*to be carried out by KCC*)

The total spend within the town centre therefore equates to £85K plus the £2k to be spent in monitoring the queues and signal timings on the Toll Bridge and any reconfiguration of the signal settings.

2.0 The Proposal

2.1 KCC has received several ideas on how this money should be spent in Sandwich. They include the following:

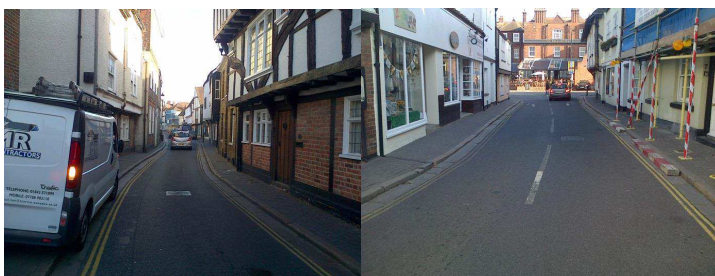
- Refresh existing markings in High Street and around the Toll Bridge area and on approaches



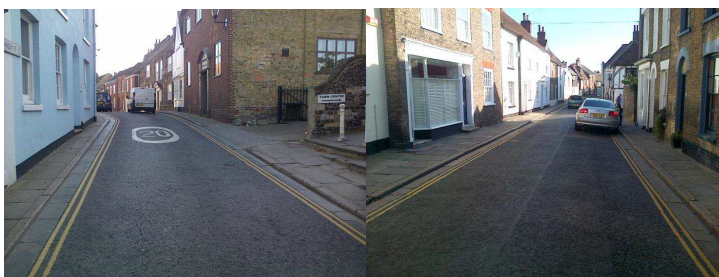
- Improve existing weight limit signs on all entry points into Sandwich



- Introduction of system of raised tables/humps in Strand Street, High Street, New Street and Moat Sole



Strand Street



High Street



New Street



Moat Sole

Examples of traffic calming features:



- Install a one-way system on Ramsgate Road Toll Bridge

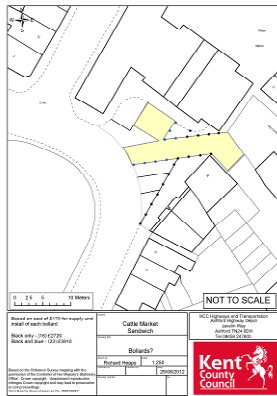


- Amend phasing of lights on Ramsgate Road Toll Bridge
- Bollards on western footway in High Street where footway is more than 2m wide
- Renewal of white lining in Moat Sole/Cattle Market area
- Improved bus parking fronting the Guildhall



Example.

- Improved parking to rear of the Guildhall



- Traffic Surveys

3.0 Finance

All costs must come out of the Section 106 Funding including any design and safety audit costs.

4.0 Consultation

Consultation will be carried out in respect of individual proposals going forward. .

5.0 Recommendation

That Members allow the schemes to be progressed once prioritised by Sandwich Town Council.

Contact Officer:	Sally Benge, Strategic Transport & Development Planner, KCC 03000 418181
Reporting to:	John Burr, Director of Highways, KCC 03000 418181